



Mission, Vision, and General Beadle August 23, 2013

Facilitated by John Swanson, TIE Deputy Director



A synthesis of your individual ideas about why General Beadle exists and where it should be headed in the future.



Mission

Mission statements define an organization's purpose. It is a single statement of why something or someone exists. It is like your **North Star**, which is not a place you go, it is a fixed point giving you perspective on where you are going.



Vision

Talk of being a visionary goes hand-in-hand with talk of leadership. So ask yourself: What will your school look like in 3 to 5 years? What new things do you intend to pursue? What problem do you need to solve? What do your students need to be successful?

**To organize the world's information and
make it universally accessible and useful.**

Google



To instantly connect people everywhere to what's most important to them.

Twitter



**To give people the power to share and make
the world more open and connected.**

Facebook



To spice up everyday life.

Chili's Grill and Bar

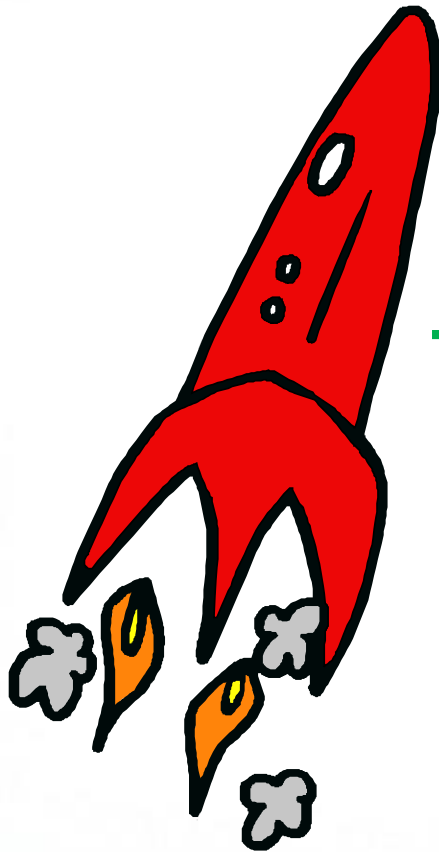


“I believe that this nation should commit itself to achieving the goal, before this decade is out, of landing a man on the moon and returning him safely to the earth.”

JFK, May 25, 1961



Rocketship Elementary Schools



Mission and Vision

To eliminate the achievement gap in our lifetime.



Rapid City Area Schools Mission Statement

Building a community of lifelong learners,
one student at a time.

Rapid City Area Schools Vision Statement


All Rapid City Area School students
will achieve to their full potential.



General Beadle Full Service School Mission Statement

Our full service community school in partnership with parents and the community will first and foremost be a "school" delivering challenging and stimulating learning experiences. General Beadle will offer services that meet the academic, health, social, and recreational needs of students, families, and the community in ways that recognize and celebrate individual differences and cultural backgrounds.

General Beadle Full Service School Vision Statement

General Beadle Community School will be a welcoming, vibrant, multi-use center that provides opportunities and access to a range of services and supports to enhance  lifelong education and development for children and families.

1. Think about General Beadle's **core purpose**. What are two or three main reasons that our school exists?
2. Why is our work here at General Beadle important? Give two or three main reasons.
3. How are we unique? Offer two or three ways General Beadle is different from other schools.
4. What kind of school do we hope to be? Offer two or three of your own **wishes** for General Beadle's future.
5. Think ahead to May 2016. What are two or three ambitious goals General Beadle can achieve between now and then?
6. What should General Beadle **value**? Describe two or three of your own, non-negotiable beliefs about education.



Think about General Beadle's *core purpose*. What are two or three main reasons that our school exists?



Why is our work here at General Beadle important? Give two or three main reasons.



How are we unique? Offer two or three ways General Beadle is different from other schools.



What kind of school do we hope to be? Offer two or three of your own **wishes** for General Beadle's future.

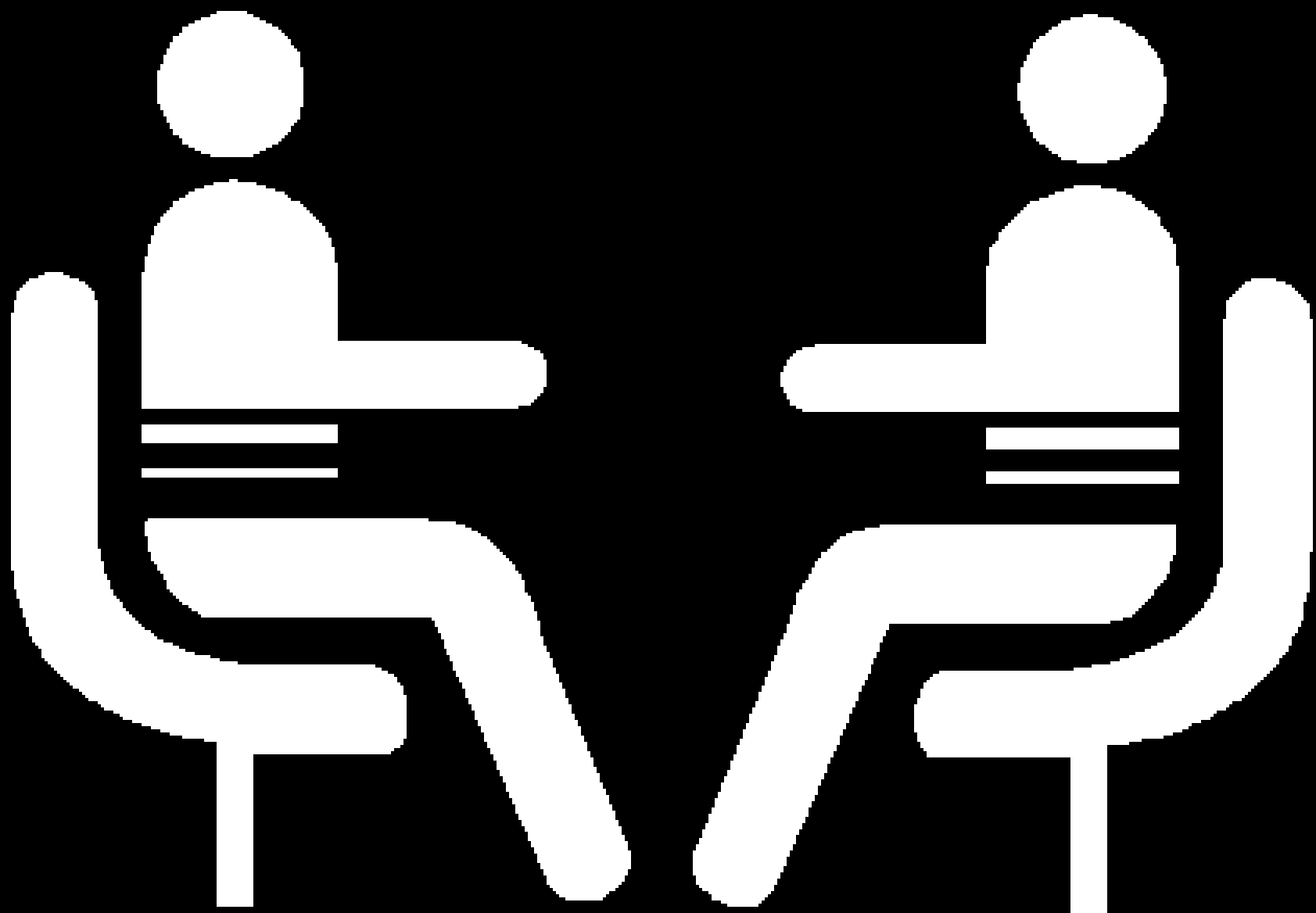


Think ahead to May 2016.
What are two or three ambitious
goals General Beadle can
achieve between now and then?



What should General Beadle ***value***? Describe two or three of your own, non-negotiable beliefs about education.





Identify and Record Themes on Chart Paper

Choose a Reporter

Organize and Submit Individual Notes



